

Urban Environmental Policy Perspective from Local Government



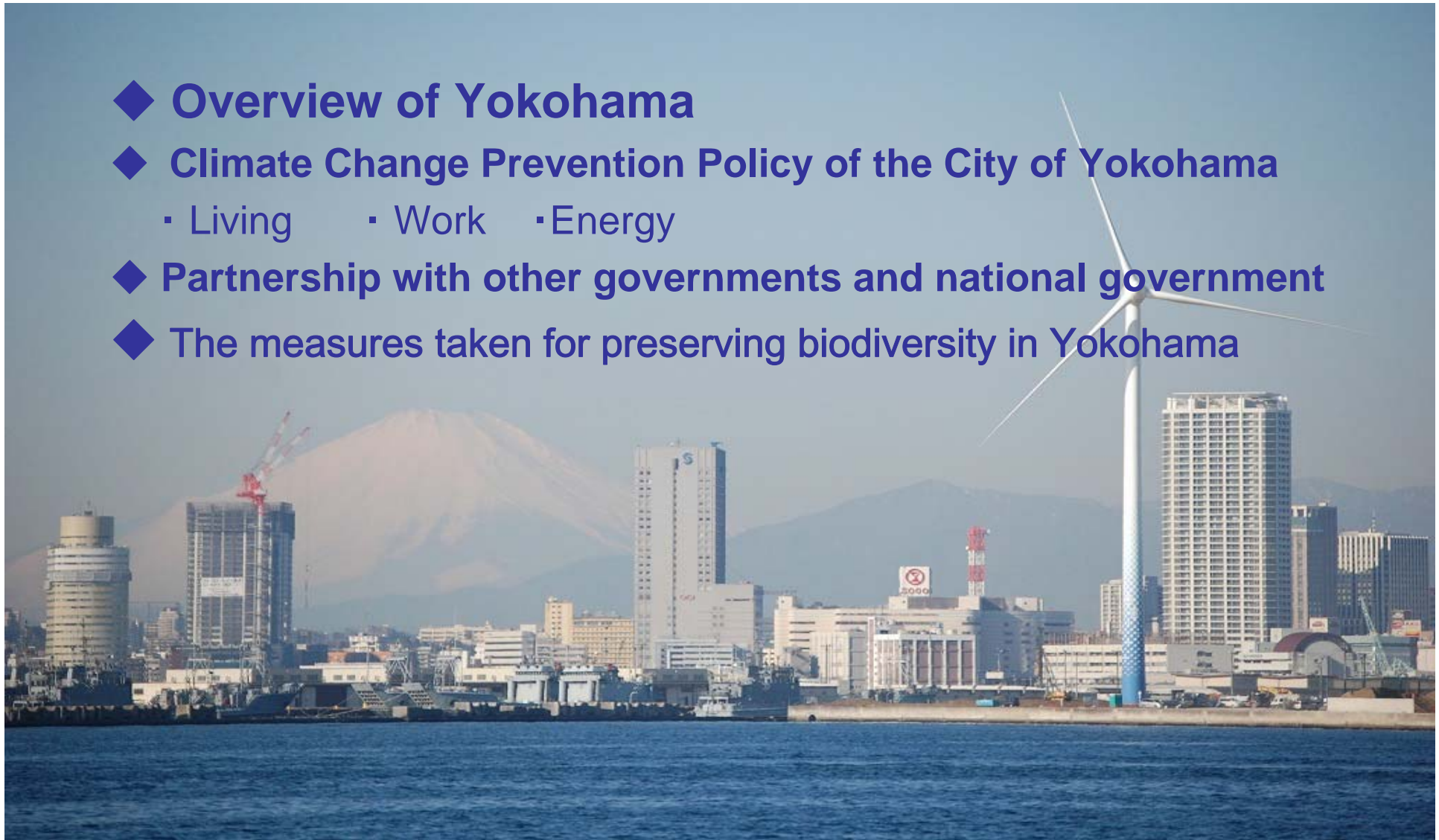
Tetsuya Nakajima, Director
Climate Change Policy Headquarters





Agenda

- ◆ Overview of Yokohama
- ◆ Climate Change Prevention Policy of the City of Yokohama
 - Living
 - Work
 - Energy
- ◆ Partnership with other governments and national government
- ◆ The measures taken for preserving biodiversity in Yokohama





City of Yokohama



- ◆ Population 3.67 million (August 2009)
- ◆ Largest municipality in Japan
- ◆ Exotic international port
- ◆ 150th anniversary of port opening (2009)





City of Yokohama

Niiharu (SATOYAMA)



Sankeien Garden



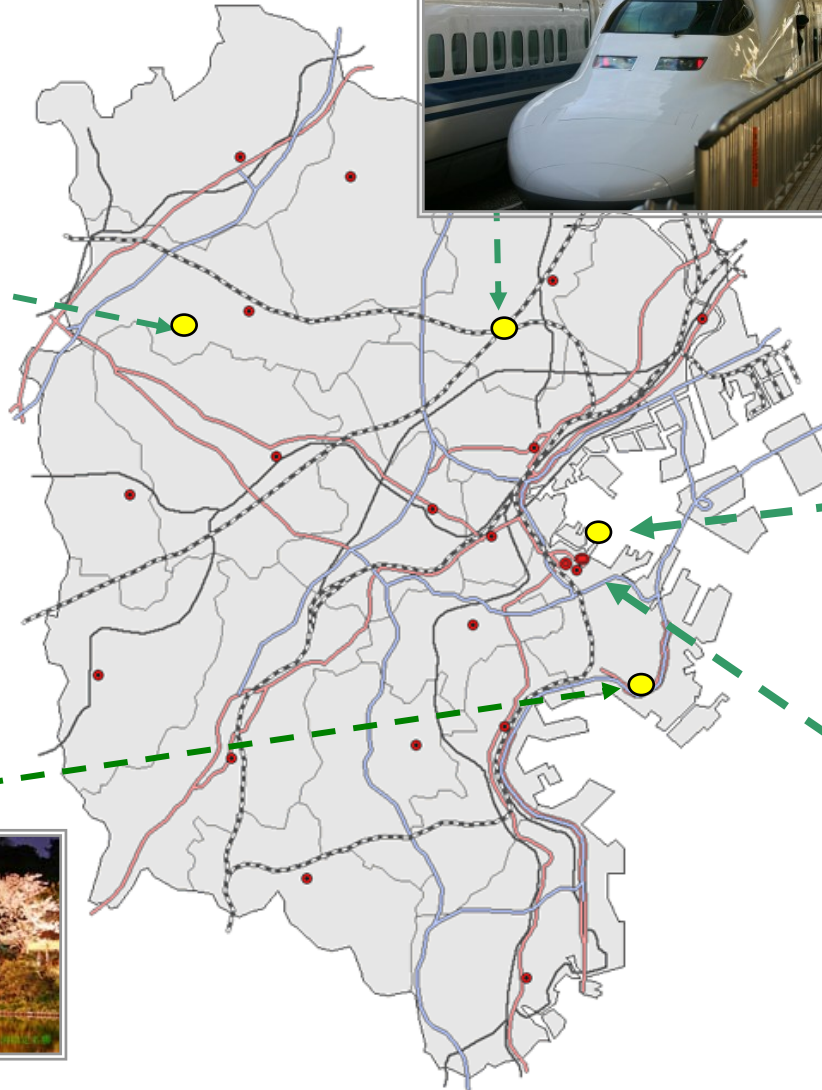
Shinyokohama St.



PACIFICO YOKOHAMA



Yokohama China Town

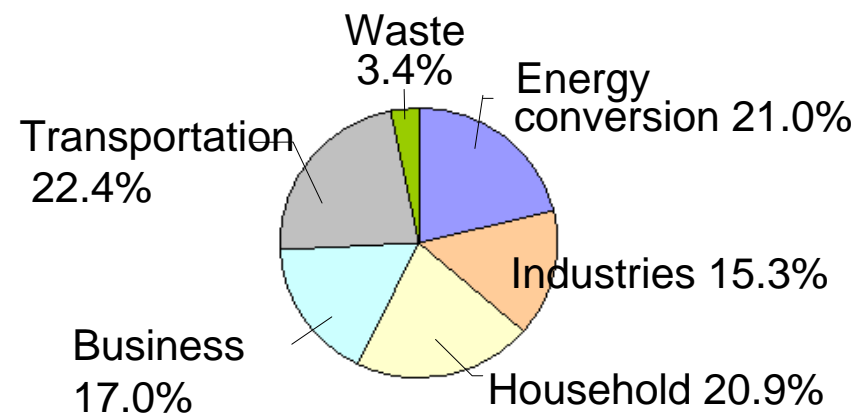




Greenhouse gas emissions from Yokohama

◆ GHG Emissions in 2006 18,890,000 tons increased by 11 % from 1990

- Emissions from Household Sector
increased by 24 %
- Emissions from Business Sector
increased by 67 %



Breakdown of emissions by sector (FY2006)

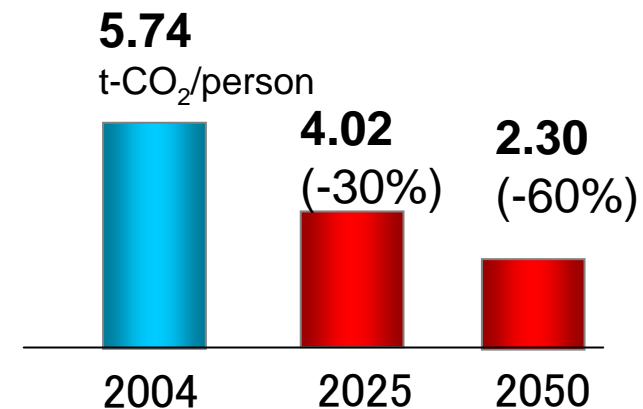


Climate Change Prevention Policy “CO-DO30”

- ◆ Formulated in January 2008
- ◆ Medium- and long-term reduction targets

- by 2025: more than 30%
- by 2050: more than 60%

(set on per citizen,
in comparison with 2004)





The Road Map for “CO-DO30”

- ◆ **A five-year action plan (2009 – 2013)**
- ◆ **Sets 3 fields of category for CO2 reduction measures**
 - **Living**
To change lifestyles to reduce CO2 emissions from civic life
 - **Work**
To expand environmentally friendly business and vitalize economy
 - **Energy**
To increase renewable energy by ten fold



Living: to change lifestyle of civic life

Major project: Yokohama Eco School (YES)

Local Resident Organization



- Environmental Study Meeting
- Local Events

Citizen



Private Organization



- Practical Training Course
- Environmental program
- Workshops

School

- Environmental Study
- Cultural Festival
- Presentation
- Study Tour



All of the places in Yokohama functions as learning places and 367 million citizen participate in environmental actions

University

- Open Lecture
- Symposium



Business Organization



- Exhibition
- Lecture at School
- Events

City of Yokohama



- Training Course
- Forum
- Environmental Events



YES Events



YES Opening event
June 18, 2009



YES Short films event
July 27, 2009



“YES form the ocean”
August 31, 2009



Work: to expand environmentally friendly businesses



◆ Yokohama SBIR – Small Business Innovation Research

A Mechanism to make an active use of good technologies of small- and medium-size companies in the city for solving problems facing the city administration.

In 2008, the city gave assistances to 5 companies for the developments relating to climate change prevention.



The greening material for roofs certified as SBIR products in 2008



Work: to expand environmentally friendly businesses

◆ Yokohama Mobility “Project ZERO”

Nissan Motor Co., Ltd., and the city will work to achieve zero-emission mobility in Yokohama and electric vehicles will be promoted in this project.



The memorandum was concluded in November 2008.





Work: to expand environmentally friendly businesses

◆ Promoting partnership with private companies in Yokohama

In addition to the established councils, the city attempts to promote the cross-industrial exchange among companies.



The meeting at Tokyo Co.,
on February 5, 2008.





Energy: to increase of renewable energy

The wind power generator “Hama Wing” was built in 2007 to promote renewable energy.



Visitors watching at “Hama Wing” from the bottom.





Energy: to increase of renewable energy

The Solar panels will be installed at 184 schools in 2009.



The Solar Panel at Honcho Elementary School

The Solar Panel at Tsurumi Ward Office





Partnership with other local governments and national government

◆ Working Group for Green Economy of Council for the Low Carbon Cities established in April 2009



Working Group held in Kyoto on July 23, 2009



Partnership with other local governments and national government

◆ Working Group for Green Economy

The main theme:

promoting the cooperation between urban areas and rural areas



Yokohama citizen thinning trees in Doshi Village in Yamanashi Pref.

Yokohama citizen taking a lecture on preserving forests in Doshi Village

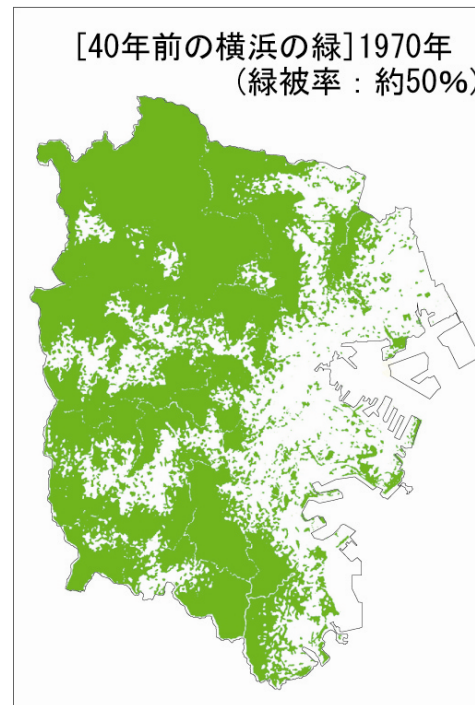




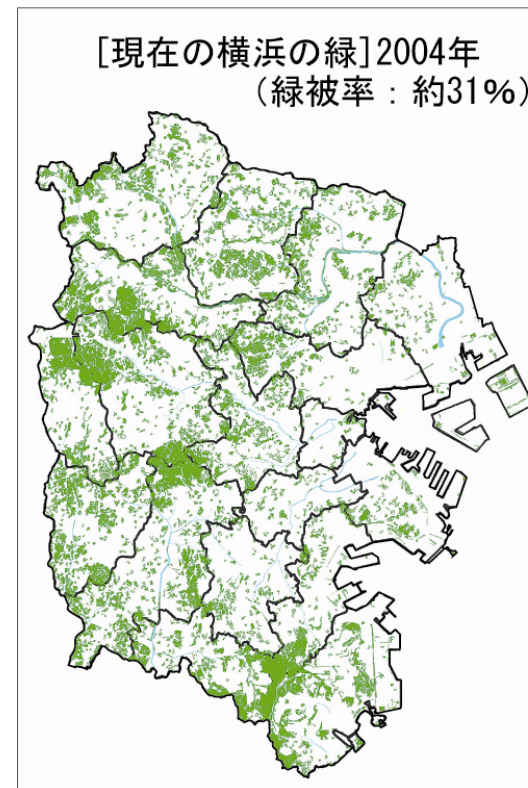
For preserving the biodiversity in Yokohama

The share of land covered by greeneries has been decreased.

About 50 % was greenery in 1970s



Only 31 % in 2004

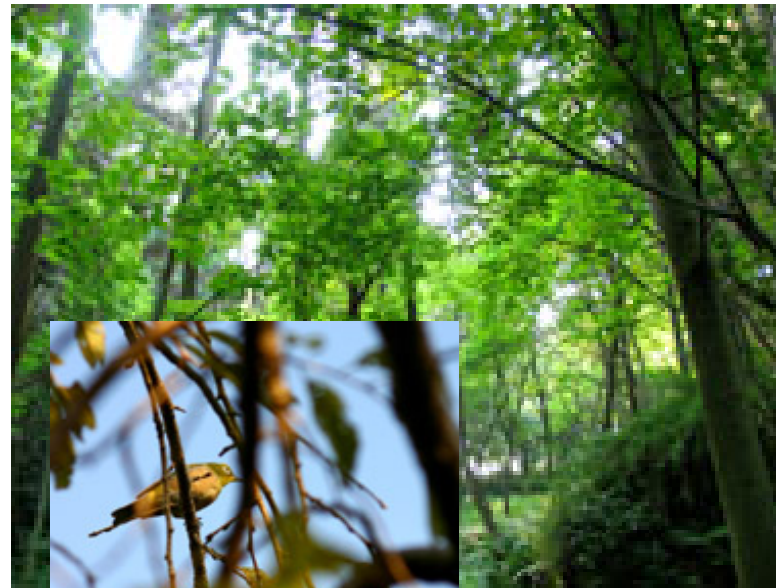
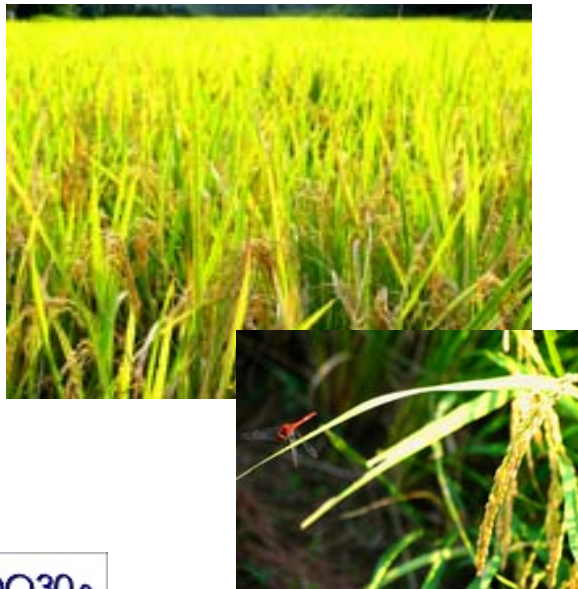




For preserving the biodiversity in Yokohama

◆ The Guideline for Preserving and Regenerating the Biodiversity established in March 2009

The city thrives to improve the natural environment for creatures .



Thank you very much.

Let's work hard for climate change prevention.



te00-nakajima@city.yokohama.jp